



Enhance Personal Safety, User Experiences & Efficiency

Workplaces and physical spaces across all types of organizations will require next-generation technology to fully realize the potential of the next normal. To ensure your readiness, you need to develop the right strategy and deploy the right technology for your spaces, people and sustainability goals.

Wx [solutions], a Sodexo corp-up, can help you design the ideal tech infrastructure and analytics program for the future of your organization. From environmental controls and safety monitoring to user experience and space utilisation, Wx solutions can do it all in ways that will protect the privacy, health and wellbeing of your people and the natural environment at the best cost.



Space Utilization



Environment



User Experience



Efficiency

Wx solutions uses the right technology to create better workplace and user experiences.



a *sodexo* corp-up



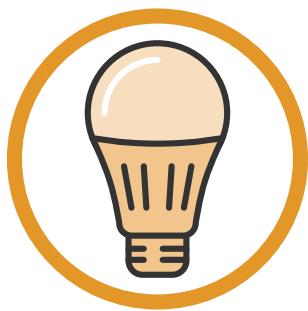
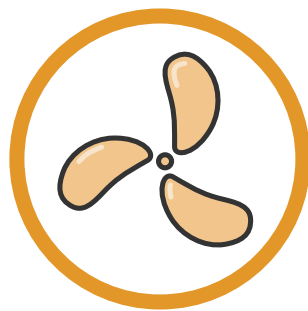
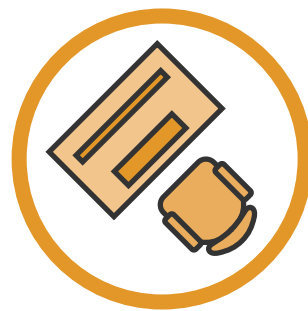
Use the right data to make the right decisions.



The technology and advice to transform your workplace.

Your Partner in Preparation

Use innovative technology and powerful analytics to lay the groundwork for a successful return to on-site activities and further optimization down the line.



Space Utilization

- Sensor solutions to monitor & control physical distancing in all areas of your workplace, and to provide real-time data to your employees
- Space analytics solutions to help you optimize real estate footprint and indicate to your employees where they can work

Environment

- Smart climate and environmental controls
- Real-time monitoring of air quality, temperature, VOCs and more

User Experience

- In-depth user experience assessments
- Touchless technology to reduce infection risks while adding convenience
- Digital solutions for indoor comfort, seat/room booking, wayfinding and access to a panel of services at the office, in mobility or at home

Efficiency

- Sustainability benchmarking & certification
- Reduce energy consumption & costs
- Shrink your carbon footprint

Learn more about partnering with Wx [solutions], plus Sodexo's complete range of programming at sodexorise.com Email: SodexoSalesUSA@sodexo.com | Phone: 866-433-8546

Solutions to start and stay strong



PREPARE
Site and employee restart



PROTECT
Enhanced cleaning, temperature monitoring and contactless provision of services



ENABLE
Nutritious to-go/prepared meals, food cards and digital services



SUPPORT
Onsite health checks and wellness services



OPTIMIZE
Physical distancing, space management/planning and efficiency services

